

FRENO AGFO XF Brake



Taglia - Size	XF	10	20	30	40	50
Coppia statica – Static torque	daNm	8÷10	18÷20	27÷30	37÷40	47÷50
Pressione d'apertura – Release pressure	bar	9	15	19	25	31

Nota: la pressione d'apertura è intesa come la soglia da superare per avere il completo sbloccaggio del freno.

Note: the release pressure value is intended for a fully opened brake.

CODICE D'ORDINAZIONE – Order Code

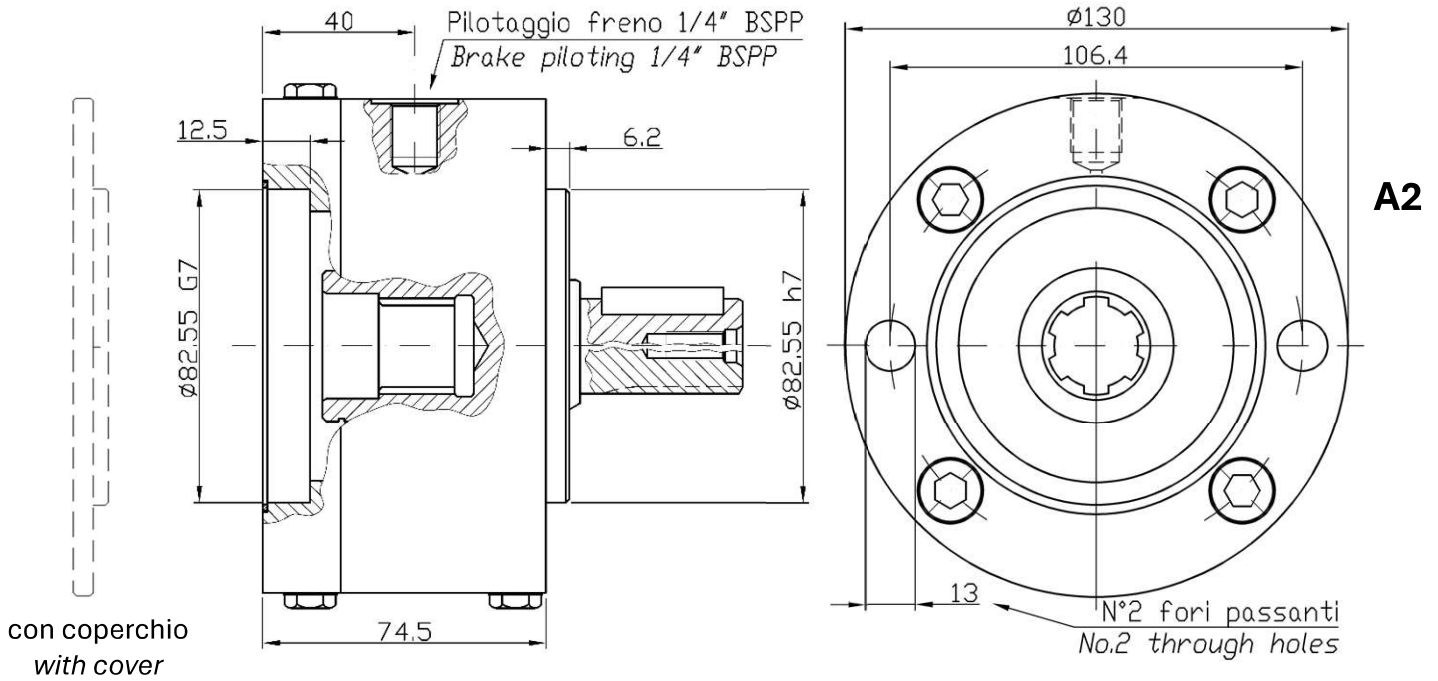
AGFO XF - ##	A2-###	A2-###	...
<p>taglia size</p> <p>10, 20, 30, 40, 50</p> <p>(vedi tab. sopra/see above tab.)</p>	<p>albero d'entrata input shaft</p> <p>C25: Cilindrico Ø25 C25: Cylindrical Ø25</p> <p>S6B: Scanalato 1"6B S6B: Splined 1"6B</p> <p>D14: Scanalato 25x22 DIN 5482 D14: Splined 25x22 DIN 5482</p>	<p>albero d'uscita Output shaft</p> <p>C25: Cilindrico Ø25 C25: Cylindrical Ø25</p> <p>S6B: Scanalato 1"6B S6B: Splined 1"6B</p> <p>A14: Scanalato ANSI 1"1/4 A14: Splined ANSI 1"1/4</p> <p>D14: Scanalato 25x22 DIN 5482 D14: Splined 1"6B</p> <p>C1N: Cilindrico 1" C1N: Cylindrical 1"</p>	<p>altre opzioni further options</p>
	<p>solo con only with</p>		
		<p>solo con only with</p>	

CHIUSO: Freno fornito con coperchio di protezione.

Closed: Brake supplied with cover.

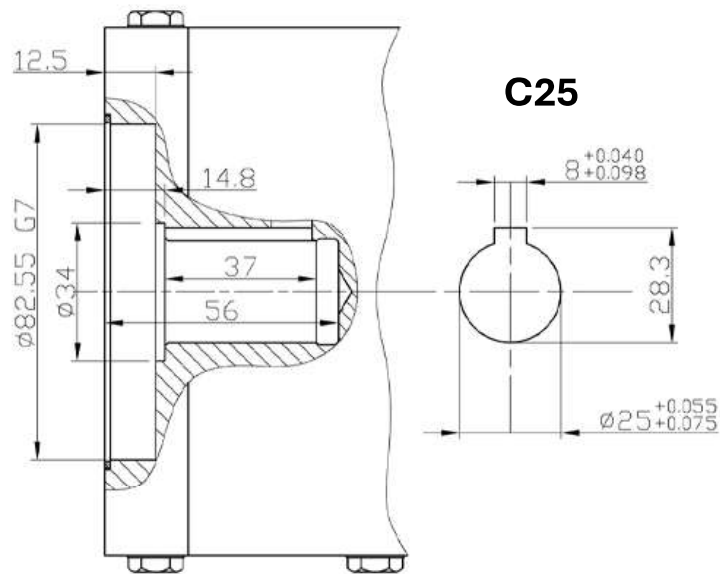
A2 → flangiatura SAE A a 2 fori / SAE A flange with 2 holes

DIMENSIONI ESTERNE – External Dimensions

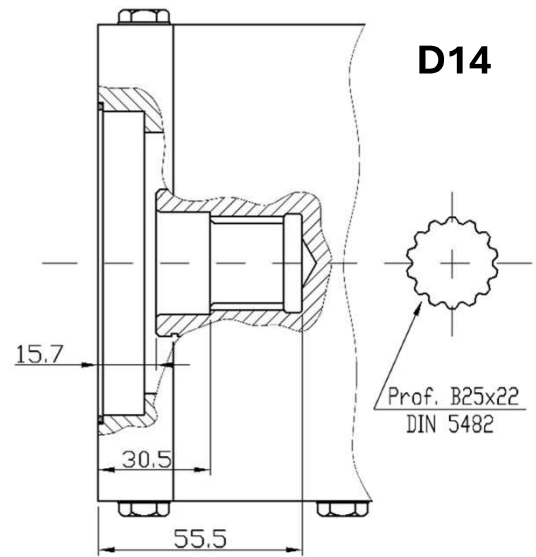
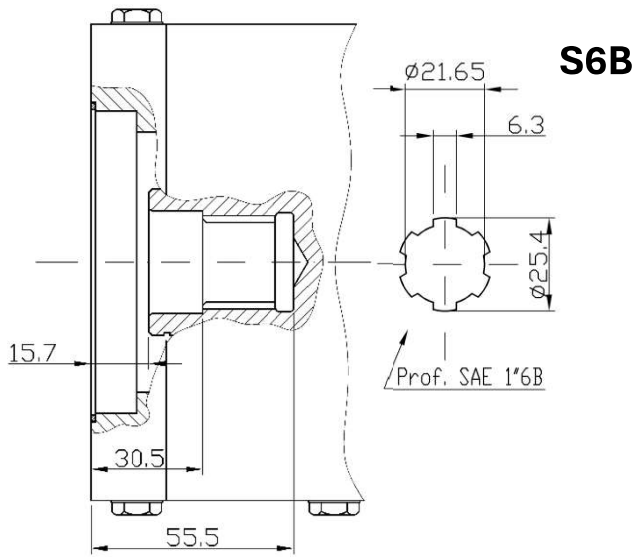


ENTRATE E USCITE – Inputs & Outputs

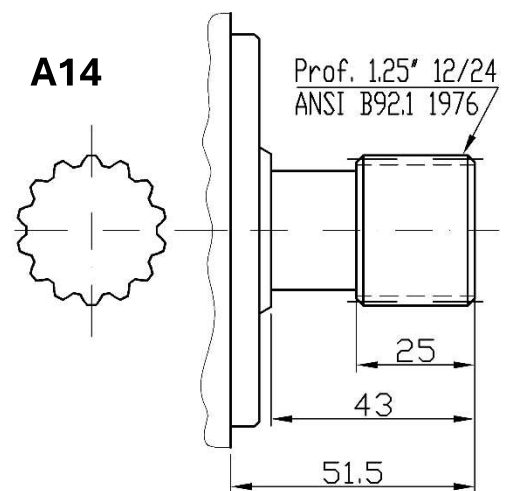
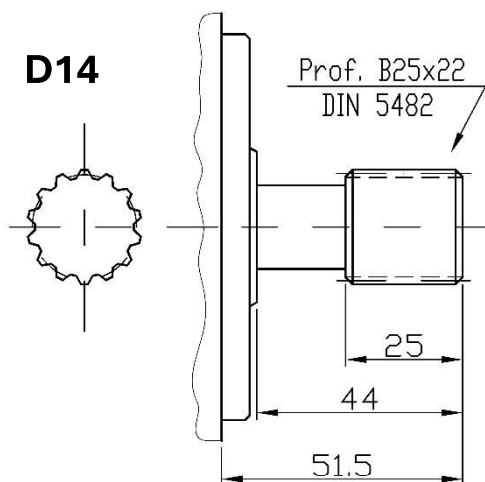
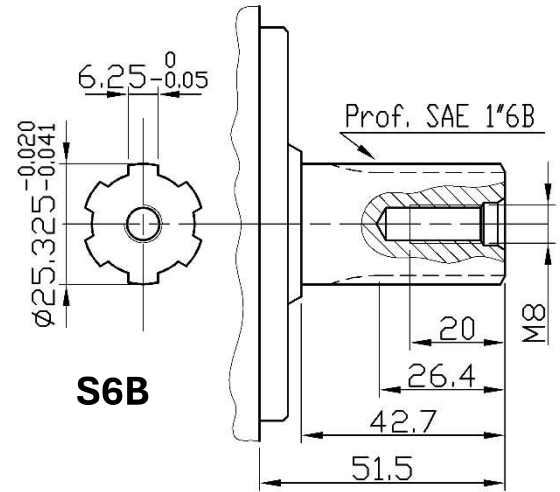
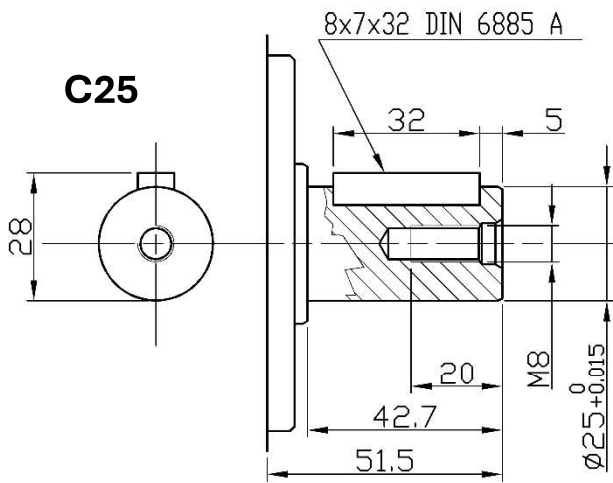
Entrata/Input C25

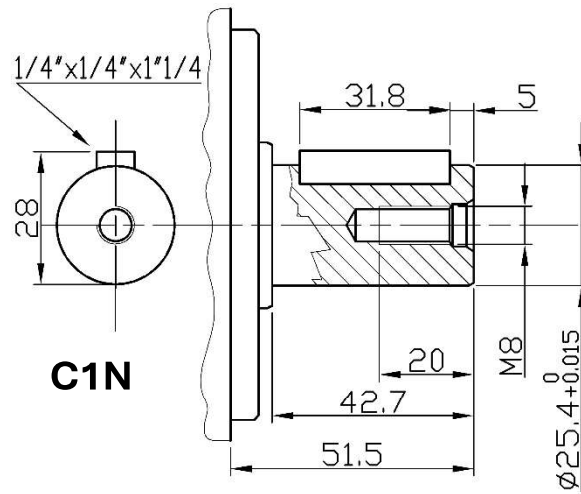


Entrate / Inputs S6B – D14



Uscite / Outputs C25 – S6B – A14 – D14



Uscita / Output C1N**CARICHI – Loads**

Il tipo di freno XF non può sopportare carichi radiali e/o assiali.

The XF brake type cannot withstand radial and/or axial loads.